

Kentucky Immunization Registry (KYIR)

Jennifer Crawley, Outreach Coordinator

2024



Kentucky Public Health
Prevent. Promote. Protect.



TEAM 
KENTUCKY[®]
CABINET FOR HEALTH
AND FAMILY SERVICES

Kentucky Department for Public Health

Organizational Chart



What is KYIR?



Free, secure, web-based immunization information system (IIS).




Centralized platform for storing and managing immunization records for all ages.



Allows public health agencies to identify coverage and facilitate vaccine distribution and management efforts.

How does KYIR work?

 KYIR is Kentucky's immunization information system (IIS).

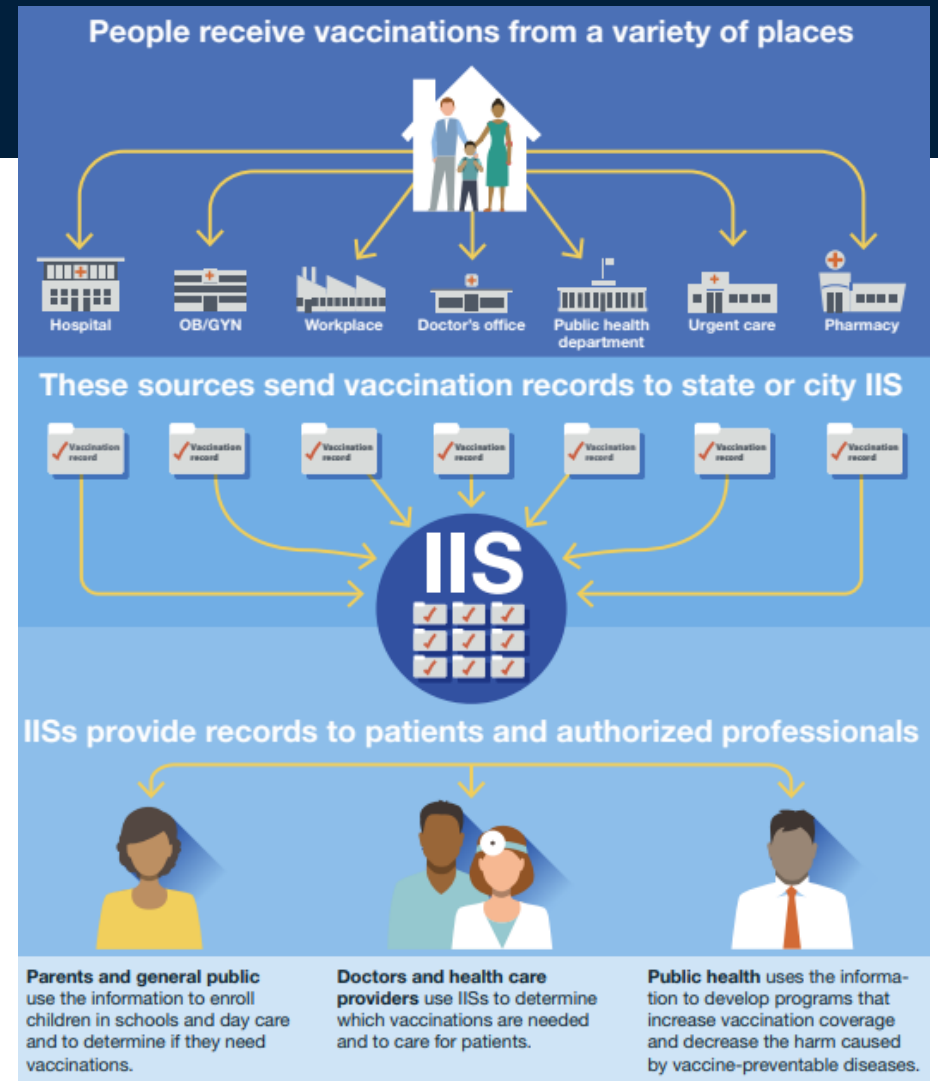


Image Source: <https://www.cdc.gov/vaccines/programs/iis/downloads/basics-immun-info-sys-iis-508.pdf>

What is an Immunization Information System?

- 🛡️ Immunization information systems (IIS) are confidential, population-based, computerized databases that record all immunization doses administered by participating providers to persons residing within a given geopolitical area. They help providers, families, and public health officials by consolidating immunization information into one reliable source.
- 🛡️ At the *point of clinical care*, an IIS can provide consolidated immunization histories for use by a vaccination provider in determining appropriate client vaccinations.
- 🛡️ At the *population level*, an IIS provides aggregate data on vaccinations for use in surveillance and program operations, and in guiding public health action with the goals of improving vaccination rates and reducing vaccine-preventable disease. IIS helps immunization programs identify populations at high risk for vaccine-preventable diseases and target interventions and resources efficiently.
- 🛡️ IIS combines immunization information from different sources into a single record. It also provides official immunization records for school, daycare, and camp entry requirements.

What are the Benefits of an IIS?

- 🛡️ Provides measurable coverage rates that can aid in public health response to outbreaks of vaccine-preventable diseases
- 🛡️ Helps increase vaccination rates by identifying disparities in coverage
- 🛡️ Helps providers with vaccine management and accountability through use of reports and assessment programs, including assessing clinic level vaccination rates

How does KYIR work?

Serves as an access point for vaccination data.



People receive vaccinations from a variety of places.



These sources send vaccination records to KYIR.



KYIR combines and provides records to authorized providers.



Information can then be used to guide patient care and improve rates.

Benefits of KYIR for Providers



Trusted
Records
Available at
Point of Care.



Meets
Incentive
Program
Requirements.



Meets
Interoperability
requirements.



Supports
inventory
management
and reporting
for state
vaccine
programs
(VFC/317).



Free Inventory
Management
Tool.



Generates
Reminder
Recall
Reports.



Who Can Enroll in the KYIR?



Medical
Offices



Hospitals



Pharmacies



Daycares/
Schools



Enrollment Forms

KYIR Enrollment

(complete one per physical location)

KYIR Business Agreement

(complete one per provider)

KYIR User Account Form – CHFS219

(complete one per log in user)

These forms are located here: <https://www.chfs.ky.gov/agencies/dph/dehp/idb/Pages/kyir.aspx>

School/Daycare Enrollment Forms

KYIR School Enrollment

(complete one per school location)



KYIR Business Agreement

(complete one per school district for public schools/one per facility for private schools)



KYIR User Account Form – CHFS219

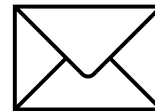
(complete one per log in user)

These forms are located here: <https://www.chfs.ky.gov/agencies/dph/dehp/idb/Pages/kyir.aspx>

Accessing the KYIR as a User

- 🛡️ **A user must be associated with an enrolled facility.** A KYIR enrollment form and business agreement must be on file with the Kentucky Immunization Branch before a user may gain access to KYIR.
- 🛡️ User accounts are created when the **CHFS219 user account form** is received.
- 🛡️ User accounts allow access to respective immunization information for the associated clinic or site and their patients.

[CHFS-219 Forms](#)



KYIRHelpdesk@ky.gov

What Can School Nurses Access in the Registry?



Student
Immunization
Records



Reports, Forms, and
Trainings



Official School
Immunization
Certificates



School nurses are ONLY able to enter vaccinations if they have written permission

School Nurses

School nurses may add historical vaccinations with written parental/guardian consent.

The privacy of student education records is protected by [FERPA](#).

School nurses may delete any vaccine that they have added.



Do not use the “Invalidate Dose” option

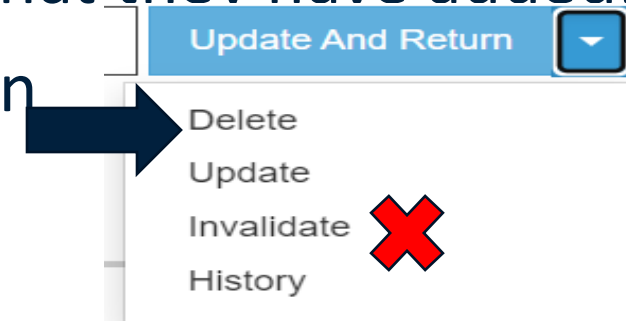


Image Source: Screenshot taken from https://kyir.chfs.ky.gov/webiznet_kyir/Login.aspx

If a dose needs to be removed that was not added by the nurse, there must be documentation showing this is an incorrect dose. Please send an encrypted e-mail the KYIR helpdesk at KYIRHelpdesk@ky.gov to request removal of the dose.

KYIR Functionality & Location

Inventory Management

- KYIR Inventory Module

Recommend

- Patient Search > Recommend

Reminder/Recall

- Reports/Training > Patient Management

Image Source: Screenshot taken from https://kyir.chfs.ky.gov/webiznet_kyir/Login.aspx

Recommend Feature

Recommends vaccinations based on the ACIP schedule, not on the Kentucky school immunization regulation.

Dates for upcoming vaccination due dates can be found on the generic 'immunization record' option found in KYIR and is in a printable format.


Vaccines recommended for that day are listed on the patient's immunization page.

At the bottom of the patient immunization page is a 'Recommend' button. It has a print option that prints the patient's immunization history as well as future vaccination recommendations.

How to Find the Recommendation Document

Vaccine	Dose	Date	Age
MMR			
MMR	1	10/02/2020	39Y 5M 5D
COVID-19			
COVID-19 mRNA (MOD)	1	01/06/2021	39Y 8M 10D

Recommend



981 AGE: 42Y 9M 25D

Print Close Audit ▼



Image Source: Screenshot taken from https://kyir.chfs.ky.gov/webiznet_kyir/Login.aspx

Recommendations for FROG, KERMIT (2452719) DOB: 04/27/1981 AGE: 42Y 9M 25D

02/21/2024

Precautions / Contraindications

This patient does not have any vaccination Precautions / Contraindications

Immunization History


MMR					
Vaccine	Dose	Date	Age	Status	Reason
MMR	1	10/02/2020	39Y 5M 5D	Valid	

COVID-19					
Vaccine	Dose	Date	Age	Status	Reason
COVID-19 mRNA (MOD)	1	01/06/2021	39Y 8M 10D	Valid	

Recommended immunizations for today, 02/21/2024 (42Y 9M 25D)

Vaccine
COVID-19 (PFR) 12+yrs
Hep B, adult
Influenza Quad Inj P
Tdap, Adsorbed
Varicella

Please do not rely solely on the Recommender to forecast immunizations. Utilize clinical judgment and the ACIP recommended immunization schedules and the CDC Pink Book @ <http://www.cdc.gov/vaccines/pinkbook/index.html#chapters>



The first recommended return date is 03/20/2024 (42Y 10M 22D)

Future recommendations based upon provider preferences for vaccines

Vaccine	Date	Age
Hep B, adult	03/20/2024	42Y 10M 22I
Td (adult), adsorbed	03/20/2024	42Y 10M 22I
Varicella	03/20/2024	42Y 10M 22I
Recombinant Zoster	04/27/2031	50Y 0M 0D
RSV, recombinant subunit	04/27/2041	60Y 0M 0D
PCV15	04/27/2046	65Y 0M 0D

KYIR Training and Information Resources

- 🛡️ KYIR users report either manually through the KYIR application or electronically through the Kentucky Health Information Exchange (KHIE).
- 🛡️ If you use an existing electronic interface (EHR) to enter vaccine data and the system has a live connection with KHIE, you are an electronic reporter.
- 🛡️ If your current EHR doesn't connect through KHIE, you are a manual reporter.

Image Source: Screenshot taken from https://kyir.chfs.ky.gov/webiznet_kyir/Login.aspx



Select a category

Select a topic

Select a topic

- Patient Management - Electronic Reporters
- Immunizations - Electronic Reporters
- IZ Quick Add - Mass Event - Electronic Reporters
- Clinic Tools - Electronic Reporters
- Inventory - Electronic Reporters
- Reports - Electronic Reporters

- 🛡️ [Tips on Logging in to KYIR \(video\)](#)
- 🛡️ [How to Print a Certificate from KYIR \(video\)](#)
- 🛡️ [How to Print a Certificate and Immunization Record from KYIR \(guide\)](#)
- 🛡️ [Manual Reporting Training Webpage](#)
- 🛡️ [Electronic Reporting Training Webpage](#)

KYIR Public Portal

chfs.ky.gov/KDPHMyVaxRecord



Kentucky Public Health
Prevent. Promote. Protect.



TEAM 
KENTUCKY[®]
CABINET FOR HEALTH
AND FAMILY SERVICES

What is the Public Portal?


Secure access point of vaccination records available to the public.

Allows individuals and legal guardians to access official immunization records.

Enables residents to access, save and share their vaccination records.



KYIR is not *only* for Providers

 **Pull your own
Immunization
Record.**
Anywhere!
Anytime!

YOUR VACCINATION RECORDS:

-  **ANYTIME**
-  **ANYWHERE**

Kentucky residents can access a copy of their vaccination records utilizing the Kentucky Immunization Public Portal.

SCAN ME



Just answer a few questions to verify your identity. It's **THAT** easy!

Scan the QR code
or visit:

chfs.ky.gov/KDPHMyVaxRecord



Kentucky Public Health
Prevent. Promote. Protect.

KYIR Public Portal

Let's get started!

You can request a vaccination record for yourself or your legal dependent.

Who is the request for?

Me

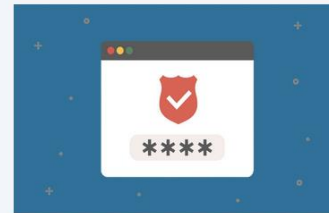
Dependent

What to Expect



Enter Info

Enter your personal information.



Verify Your Identity

Receive a text or email to confirm your identity.



View Immunizations

Access your vaccination record.

Image source: Screenshot of <https://kyirpublicportal.ky.gov/>

Who is the Request For?

Request can be made for dependents or for yourself.

Who is the request for?

Me Dependent

Enter Information

Please complete the fields below with your dependent's information. Make sure the information is entered exactly how it is documented at their health care provider. An exact match is required to obtain your dependent's immunization record.

All fields marked with * are required.

First Name *

Last Name *
Date of Birth (MM/DD/YYYY) *
Gender *
Verify Your Identity

As the legal guardian or parent of the dependent you entered above, please enter your email or mobile phone number to verify your identity. Your information must be an exact match to what your dependent's health care provider has on file.

Mobile Phone Email

Immunization records printed from this site may not be complete. The records represent only the data reported to and entered in the system.



Who is the request for?

Me Dependent

Enter Information

Please complete the fields below with your information. Make sure the information is entered exactly how it is documented at your health care provider. An exact match is required to obtain your immunization record.

All fields marked with * are required.

First Name *

Last Name *
Date of Birth (MM/DD/YYYY) *
Gender *
Verify Your Identity

Please enter your email or mobile phone number to verify your identity. Your information must be an exact match to what your health care provider has on file.

Mobile Phone Email

Immunization records printed from this site may not be complete. The records represent only the data reported to and entered in the system.

Image source: Screenshot of <https://kyirpublicportal.ky.gov/>

Immunization Records

When you are logged in to the public portal, you have the option of downloading your full record, school certificate, or proof of COVID-19 vaccination.

★ Download Full Record ★ Download School Certificate

★ Download COVID-19 Record ★ View COVID-19 QR Code

SIMPSON, BART DATE OF BIRTH: 04/05/2007 AGE: 16 Years 9 Months 20 Days GENDER: Male

! = Invalid Dose ⊗ = Dose determined invalid by provider

Dose #	Vaccine	Date Given MM/DD/YYYY	Age at Time of Vaccination
DTaP / TD / Tdap			
1	DTaP-IPV-Hib-HepB (Vaxeli)	06/15/2007	0 years 2 months 10 days
2	DTaP-IPV-Hib-HepB (Vaxeli)	08/18/2007	0 years 4 months 13 days
3	DTaP-IPV-Hib-HepB (Vaxeli)	10/23/2007	0 years 6 months 18 days
4	DTaP (Infanrix)	07/07/2008	1 years 3 months 2 days
5	DTaP-IPV (Kinrix)	04/15/2011	4 years 0 months 10 days
6	Tdap, Adsorbed	04/05/2017	10 years 0 months 0 days
Hep A			
1	Hep A, ped/adol, 2D	04/05/2008	1 years 0 months 0 days
2	Hep A, ped/adol, 2D	10/05/2008	1 years 6 months 0 days
Hep B			
1	Hep B, ped/adol	04/05/2007	0 years 0 months 0 days
2	DTaP-IPV-Hib-HepB (Vaxeli)	06/15/2007	0 years 2 months 10 days

Image source: Screenshot of <https://kyirpublicportal.ky.gov/>

Help!

Help ✕

To use the Public Access Portal

- Allow this page to generate pop-ups (do not block pop-ups).
- If not already installed, install Adobe Acrobat Reader (used to view the Official Immunization Record).
Download for free at <http://get.adobe.com/reader/>

Click on the following links for KYIR public portal information and support:

- Visit [KYIR Patient Portal Information](#) for step by step instructions, YouTube videos, and information on using the KYIR public portal.
- If you are unable to access your (or your minor child's) record, please [complete this online form](#) for assistance.

[Close](#)

Image source: Screenshot of <https://kyirpublicportal.ky.gov/>

Common Questions about the Public Portal

1. I am unable to access my records.
 - Click help icon and follow steps to complete an online form for assistance. You will need proof of identification for self and proof of birth certificate or guardianship for dependent.
2. Why aren't all my vaccinations on my record?
 - Incomplete records are a result of incomplete data. Contact provider to request data updated in KYIR.
3. Is my information safe?
 - Two factor authentication.

KYIR is a secure web based that abides to HIPPA protocols.
4. Why isn't the public portal working on my browser?
 - Users must use the following browsers: Google Chrome, Microsoft Edge, or Mozilla Firefox.
5. What information is needed to access my records?
 - Exact matches are needed to access records: name, date of birth, phone number or e-mail.
 - Phone number or e-mail must be an exact match to what provider has entered in KYIR during your last vaccination.

KYIR Public Portal Link

You may access the KYIR Public Portal via the link or QR code below.

chfs.ky.gov/KDPHMyVaxRecord



KYIR helps healthcare providers prioritize the health and safety of residents in Kentucky



Thank you.

Jennifer.Crawley@ky.gov

KYIRHelpdesk@ky.gov

502-564-0038

Contact the Helpdesk

Monday-Friday 8:00 - 4:00

Contact KYVaxProvider@ky.gov for Provider Enrollment Information



Kentucky Public Health
Prevent. Promote. Protect.



TEAM 
KENTUCKY[®]
CABINET FOR HEALTH
AND FAMILY SERVICES

Additional Contact Information

Issue	Contact
Questions related to user or clinic accounts, training, enrollment, or vaccine programs.	KYIRHelpdesk@ky.gov
Questions regarding VFC or Adult program, change in coordinator requests, or enrollment.	KYVaxProvider@ky.gov
Access to the KYIR public portal for vaccination records including digital copy & school certificates.	chfs.ky.gov/KDPHMyVaxRecord
Questions about vaccine ordering or inventory.	DPH.KVP@ky.gov
Questions regarding vaccine storage and handling.	VaxColdChain@ky.gov